

## GTS-4E-60 GPS Module

Perfect Wireless Experience



Capture Sensitivity  
-147dB



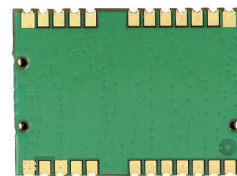
Tracking Sensitivity  
-161dB



Operating Temperature  
-40 ~ +85°C

FIBOCOM GTS-4E family is specially designed for the application of M2M technology. It is a high-performance GPS receiver with a design based on the SIRF-IV chip. The module is of extremely compact structure and small-sized. Under the same chip specification, it has fast signal acquisition capability, low power consumption, strong anti-interference performance and broad operating voltage range which make it suitable for personal entertainment and navigation devices and tracking devices.

The SiRFLive tool provided for free by Fibocom is a graphical interface platform for learning, evaluation and diagnosis of modules. It has simplified the development work of engineers and greatly reduced the development cycle.



### Available For

- Global Market

## GTS-4E-60 GPS Module

Perfect Wireless Experience

### G610 GSM/GPRS Module Technical Specifications

#### Product Features

- Chipset: SiRF
- Dimensions: 16.0 x 12.2 x 2.6mm
- Weight:  $\leq 1$  gram
- Packaging: LCC
- UART: 1
- Average Current: 33mA
- Operating Voltage: 2.7 ~ 5.5V
- Operating Temperature: -40 ~ +85°C

#### Velocity Accuracy

- Speed:  $< 0.1$ m/s
- Heading:  $< 0.5$
- Horizontal Positioning:  $< 2.5$ m/s

#### TTFF

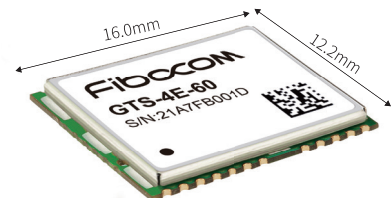
- Hot Start:  $< 1$  s
- Warm Start:  $< 35$  s
- Cold Start:  $< 35$  s

#### Sensitivity

- Acquisition: -147 dBm
- Tracking: -161 dBm
- Navigation: -161 dBm

#### Receiver

- Tracking: L1, CA code
- Channels: 48
- Max Update Rate: 1 Hz
- Max Velocity:  $< 1000$  knots



#### Approvals

- CE